

## Kit Management

MATRIX-TM lets you manage Kits. A kit is created from a list of items, along with the quantity of each such item.

In order to define a kit, you need to create a new item of type "Kit". In the Matrix – manage screen click the Item icon. Then click the add item icon in the upper left of the page. The item maintenance screen will pop up. Once a Kit item is created, a new tab "Kit Items" is displayed. In this tab it is possible to define all the items which make up the kit. These items are defined along with their respective quantities. (See 'Defining a Kit Item' below)

When a Kit item is being issued, there are two possibilities:

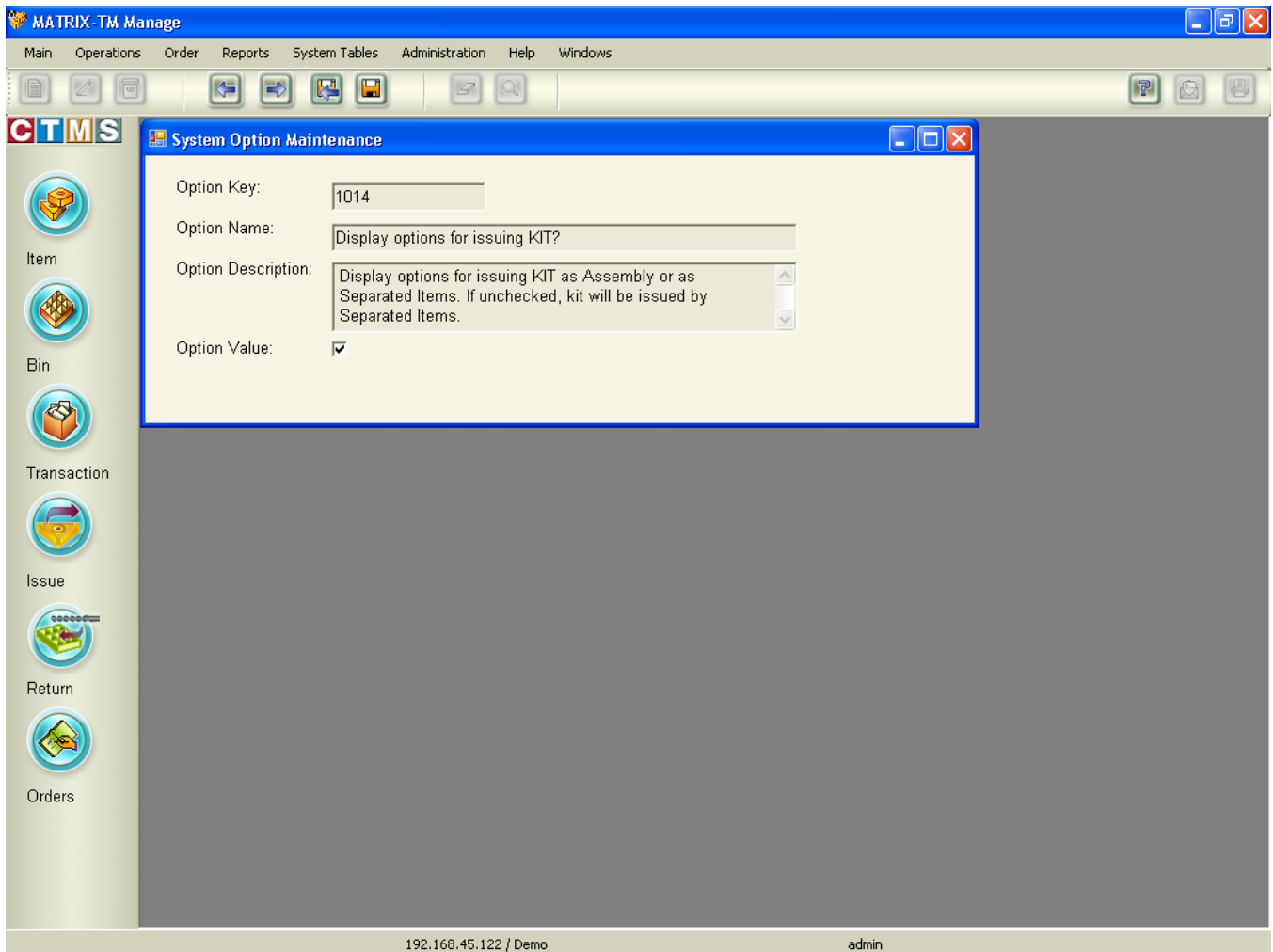
- If the kit item is stored in a bin as one assembly, it is issued like any other item from a bin.

In order to issue the kit as an assembly the 'Option Value' box must be checked for System Option 1014. Go to Administration > System Options. Double click the option on the search screen to open the Option Maintenance screen for the option (Option 1014 is at the bottom of the table – 'Display options for issuing Kit?'). Check the 'Option Value' box then Save and exit.

The screenshot shows the 'Search System Options' window in the MATRIX-TM Manage application. The window title is 'MATRIX-TM Manage' and the menu bar includes 'Main', 'Operations', 'Order', 'Reports', 'System Tables', 'Administration', 'Help', and 'Windows'. The left sidebar contains icons for 'Item', 'Bin', 'Transaction', 'Issue', 'Return', and 'Orders'. The main area shows search filters for Group, Option Key, Option Name, and Option Description. Below the filters, it states 'Found 67 Records.' and displays a table of system options.

Option Key	Option Name	Group	Option Description	Option Value
811	Show Item Code an...	Purchase	In printed order, show Item Code and Descripti...	Yes
900	Average usage calc...	Planning	Average Usage can be an arithmetic average (...	MWA
901	MWA factor	Planning	The factor used to make the weighting of the M...	0.3
902	Percent of Extreme I...	Planning	The percentage of extreme cases (between 0 - ...	0.1
903	Stock Management I...	Planning	Stock management level used for the automatic...	All levels
904	Item from Reworked ...	Planning	If checked, Reworked bin will function the same...	Yes
905	Item from Used bin g...	Planning	If checked, Used bin will function the same as N...	No
1004	Require password w...	Touch	Does the user have to input password after ba...	No
1007	Login Time-out	Touch	Waiting time (in seconds) until the system will a...	600
1008	User for Automatic I...	Touch	User name that after loading TOUCH, the syste...	
1010	Show Keyboard on I...	Touch	Show virtual keyboard when opening search sc...	No
1011	Show Additional Ite...	Touch	Show the additional Item Code/Description on g...	No
1012	Barcode Reader pre...	Touch	Prefix that Barcode Reader adds to the scanne...	BC
1013	Waiting time until Fo...	Touch	Waiting time (in minutes) from opening drawer ...	2
1014	Display options for I...	Touch	Display options for issuing KIT as Assembly or ...	Yes

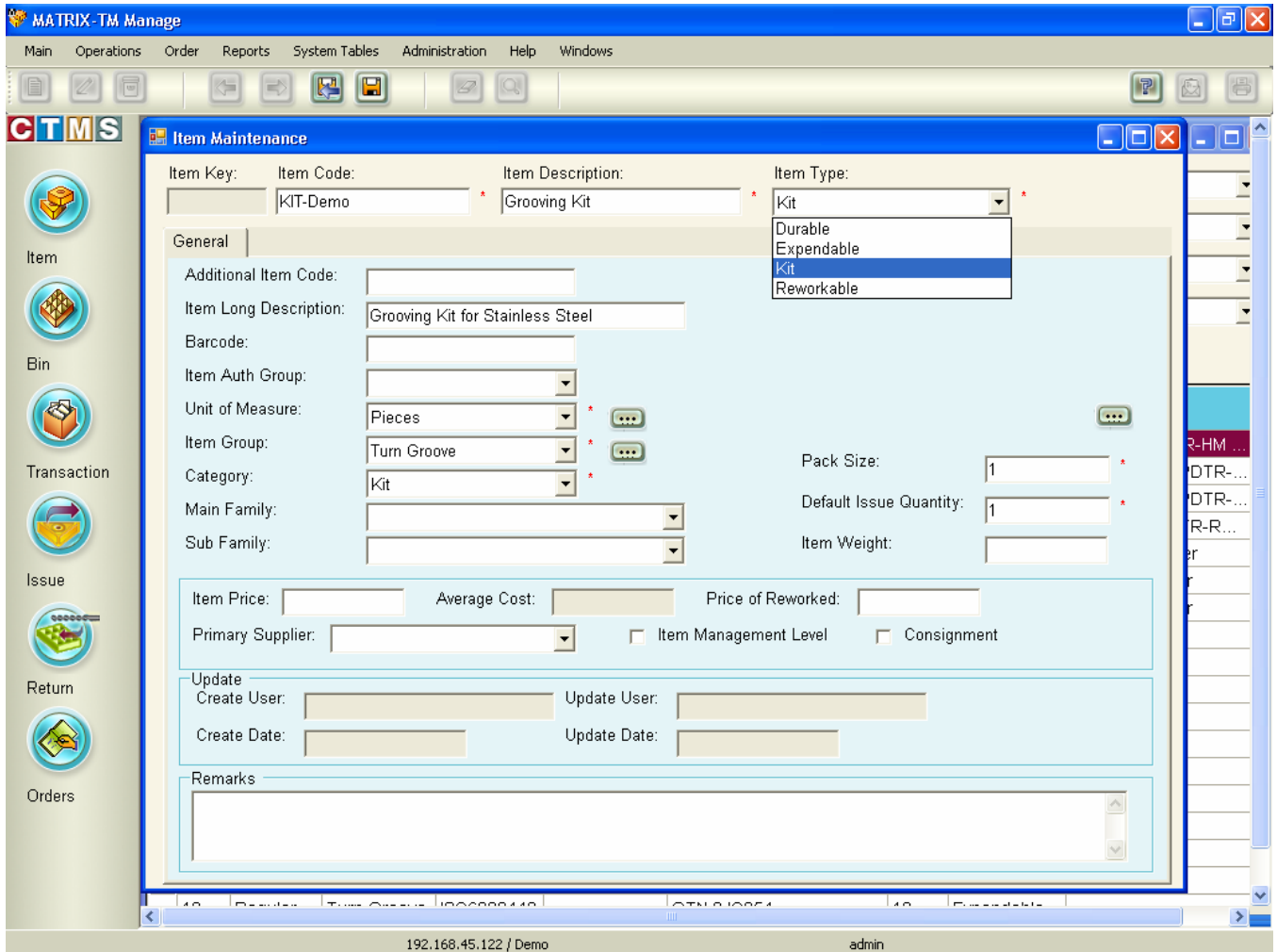
At the bottom of the window, the status bar shows 'Search Completed. Records Found. 192.168.45.122 / Demo admin'.



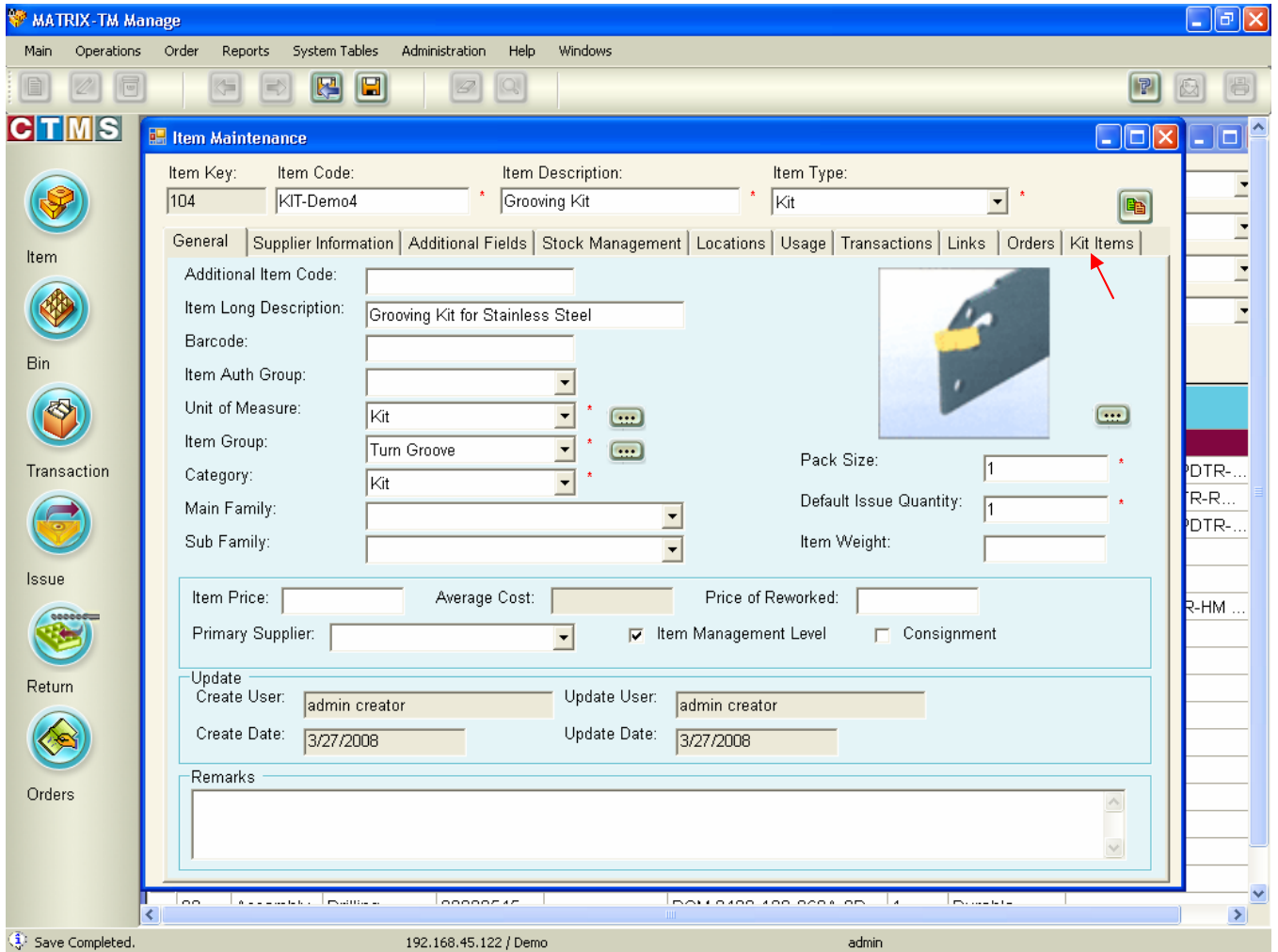
- If the kit item is comprised of items stored in different bins, the system will issue all the defined items continuously one after the other.

### **Defining a Kit Item**

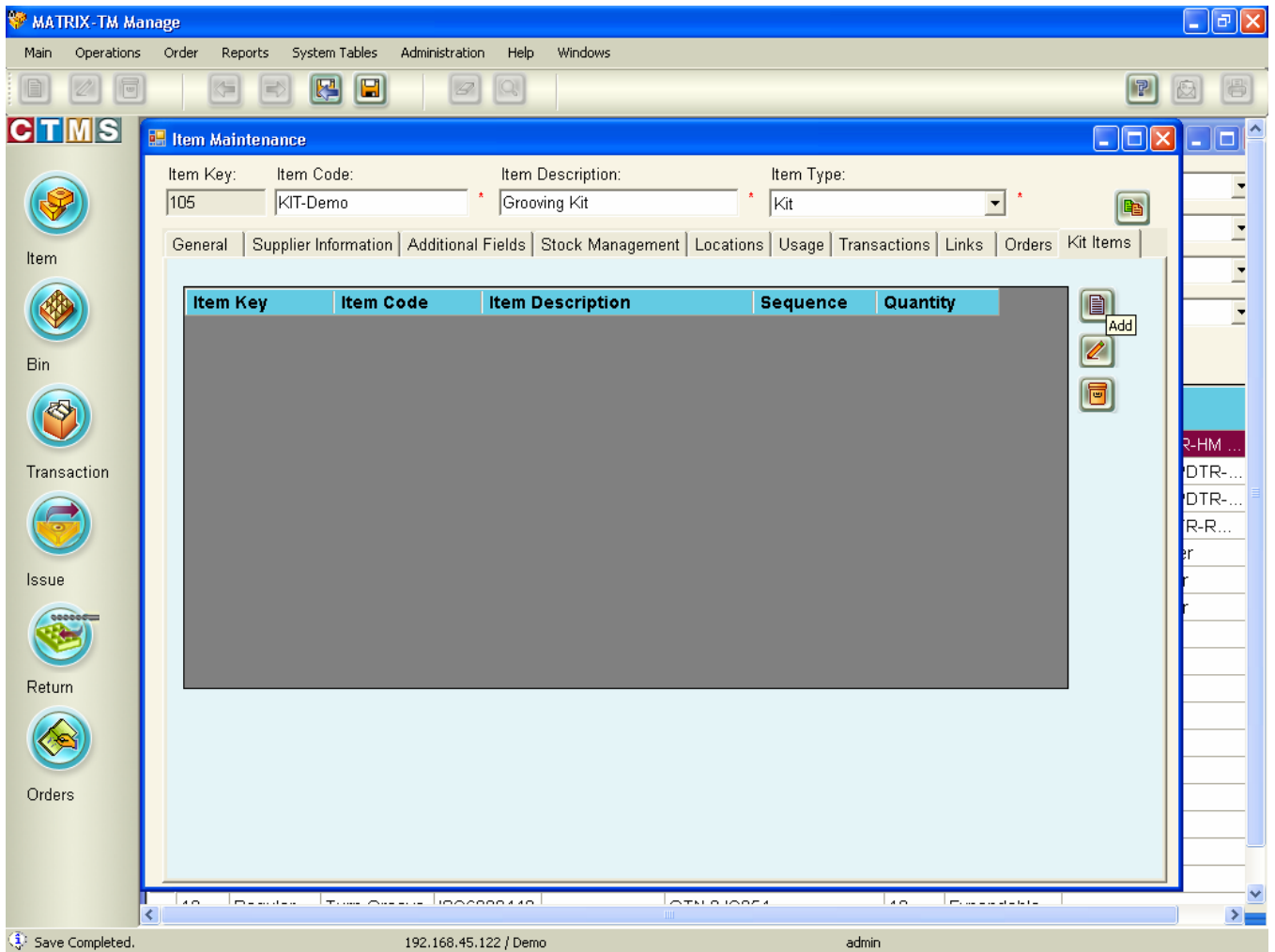
1. Go to: "Menu: Main > Item" or click on the "Item" icon.
2. Create a new item and choose Item Type Kit.



3. Fill in the required information (marked by red \*) for the item and click the 'Save' icon. This will open a new tab called "Kit Items".



In this TAB you can add the individual items which make up the kit.  
Click the 'Add' icon. The Items screen will pop up. Double click the item you would like to add to the kit.



For each individual item in the Kit you can add the following data after adding the item to the kit. Be sure that there are ample quantities of the items in the bins to fulfill the kit when it is issued.

Quantity: How many of each individual item per kit unit.

Sequence: In what order to show the lines.

Remarks: Any text which is related to this item.

After adding the items to the kit be sure and click 'Save'.

MATRIX-TM Manage

Main Operations Order Reports System Tables Administration Help Windows

CTMS

Item Maintenance

Item Key: 105 Item Code: KIT-Demo4 Item Description: Grooving Kit Item Type: Kit

Additional Fields Stock Management Locations Usage Transactions Links Orders Kit Items

Item Key	Item Code	Item Description	Sequence	Quantity
27	ISC6002343	DGN 3102C IC354	0	0

Item Code: ISC6002343 Item Description: DGN 3102C IC354

Quantity: 0 Remarks:

Sequence: 0

100 General... Threading 105601148 APKT 1003PDR-HM 10 Expendable

Update Completed 192.168.45.122 / Demo admin