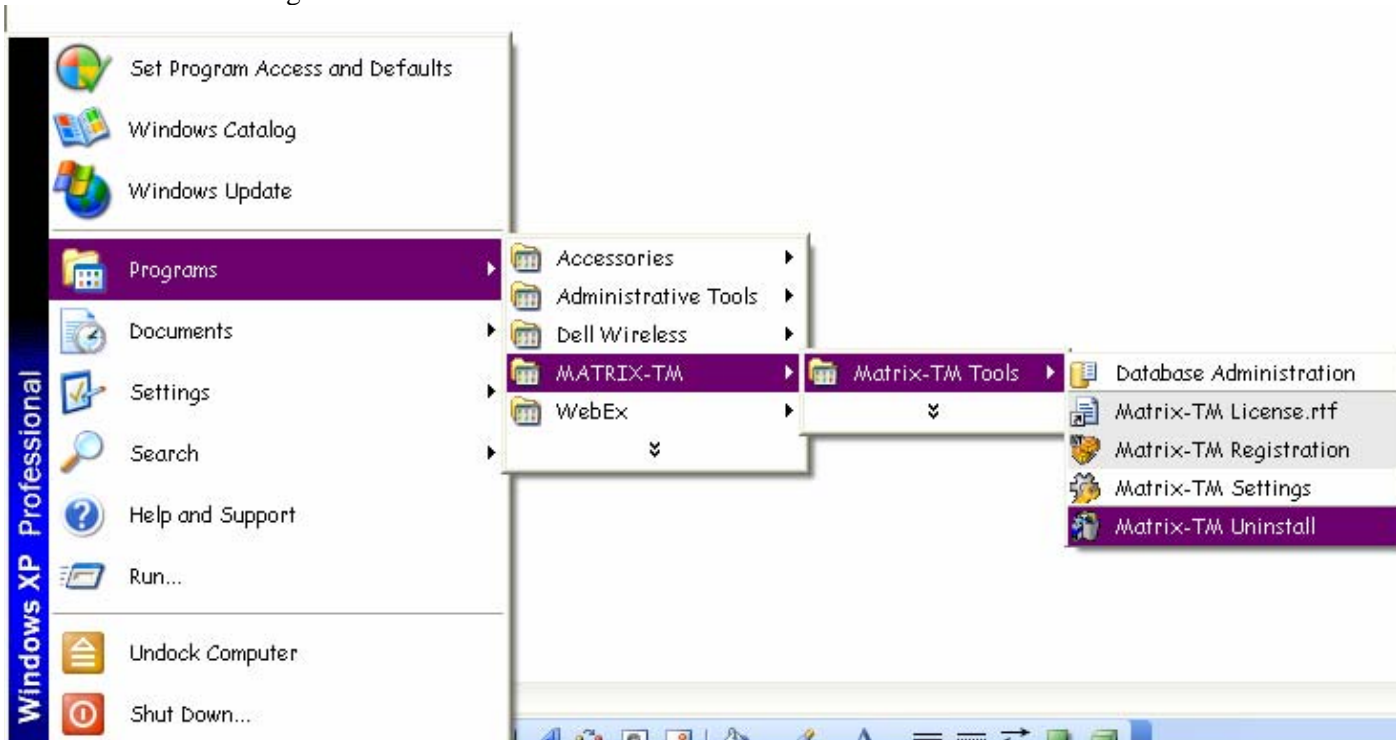


Upgrading to Matrix 4.2

In order to upgrade to a newer version of Matrix, the older version must be removed first.

1. To remove the old software, go to Windows Start Menu > Programs > MATRIX-TM > MATRIX-TM Tools > MATRIX-TM Uninstall and select the option **'Remove'** during uninstall.



2. Or you can Uninstall the previous version of Matrix by going to Start > Settings > Control Panel > Add or Remove Programs. Find Matrix on the list and click Remove. Follow the on screen instructions.

Control Panel

File Edit View Favorites Tools Help

Back Search Folders

Address Control Panel

Control Panel

Switch to Category View

See Also

- Windows Update
- Help and Support

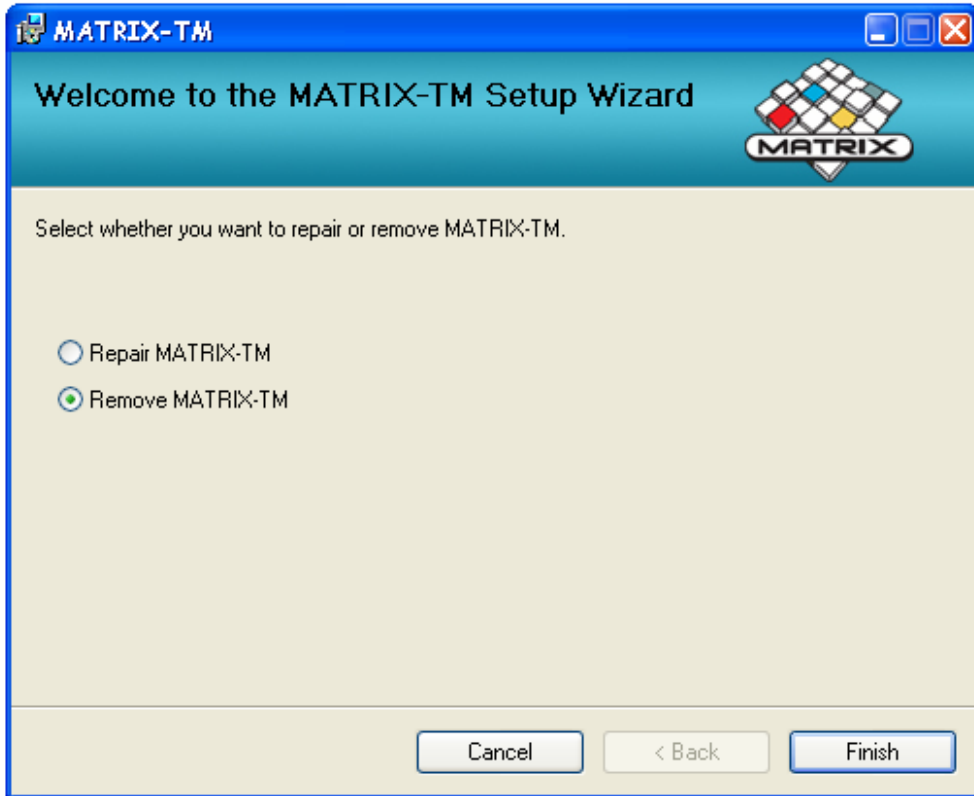
- Accessibility Options
- Add Hardware
- Add or Remove Programs

Add or Remove Programs

Currently installed programs: Show updates Sort by: Name

Program Name	Size
Exodus Jabber Client (remove only)	6.45MB
Google Toolbar for Internet Explorer	6.78MB
Google Updater	2.46MB
High Definition Audio Driver Package - KB835221	
HP 9100c Digital Sender - Client	0.41MB
Intel(R) Graphics Media Accelerator Driver	
MagTek USBMSR 1.08	0.96MB
Malwarebytes' Anti-Malware	3.81MB
MATRIX-TM	Size 90.36MB
Click here for support information.	
Used frequently	
Last Used On 3/20/2008	
To change this program or remove it from your computer, click Change or Remove.	
	<input type="button" value="Change"/> <input type="button" value="Remove"/>
McAfee Anti Spyware Enterprise Module	30.88MB
McAfee Virus Scan Enterprise	37.00MB
Microsoft .NET Framework 2.0	88.38MB
Microsoft ActiveSync	18.22MB
Microsoft Office Professional Edition 2003	365.00MB
Microsoft SQL Server Desktop Engine	75.74MB
Mozilla Firefox (2.0.0.13)	21.99MB
SigmaTel Audio	15.33MB

- Change or Remove Programs
- Add New Programs
- Add/Remove Windows Components
- Set Program Access and Defaults



3. After uninstall is complete restart your computer and then place the Matrix 4.2 CD into CD player.

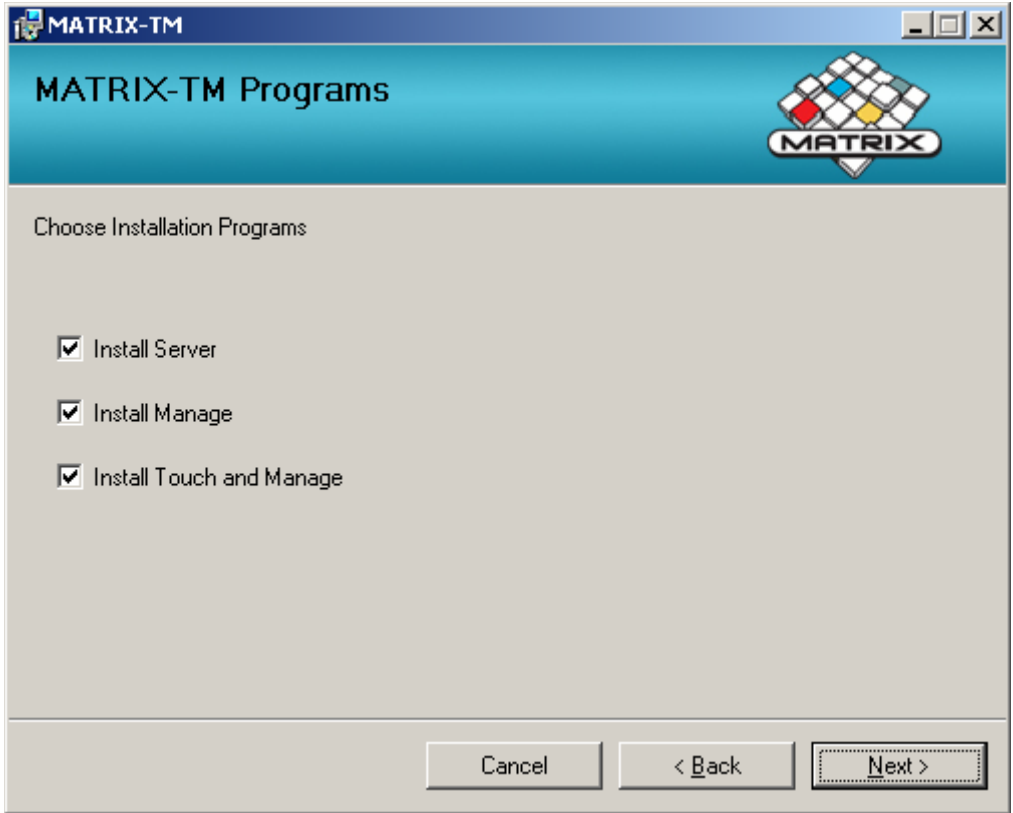
To install the MATRIX-TM software, follow these steps:

1. Open MATRIX-TM installation CD.
2. Run the **SetupAll.msi** file.

Follow the installation instructions. See p.20 of the **MATRIX-TM User Guide Version 4.0** for more information.

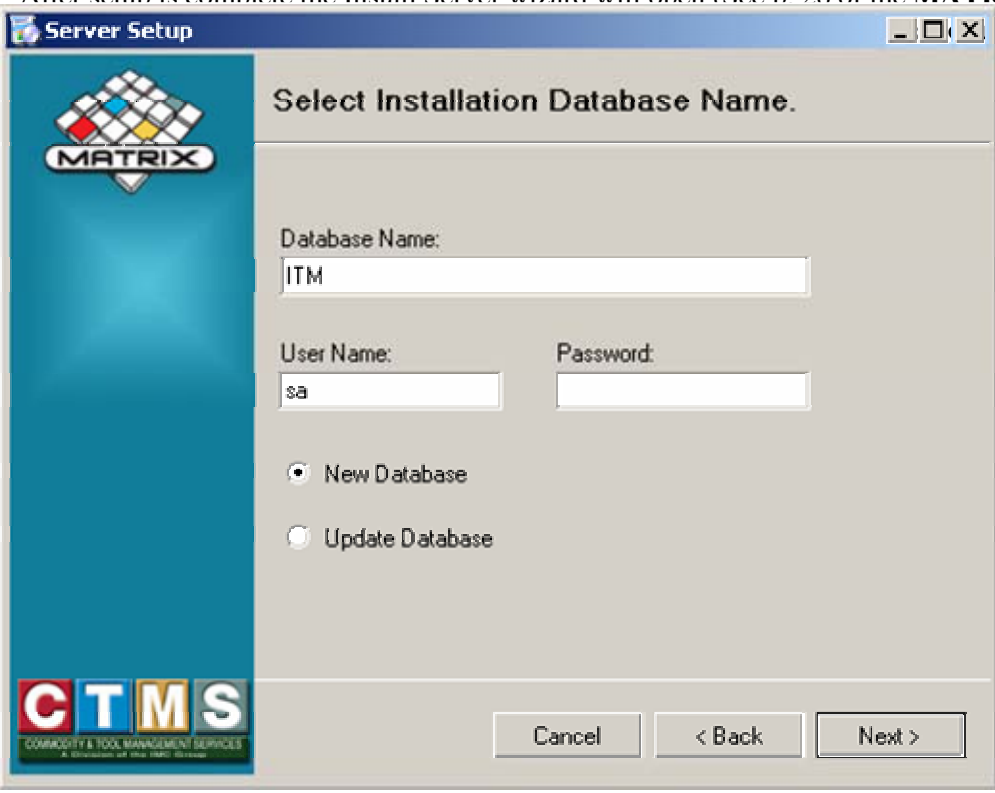
During installation the database will need to be updated to the current version. Be sure to check all the boxes then click next. This will need to be done to all computers and cabinets running Matrix.

NOTE: Remote computers do not require that Touch be installed.

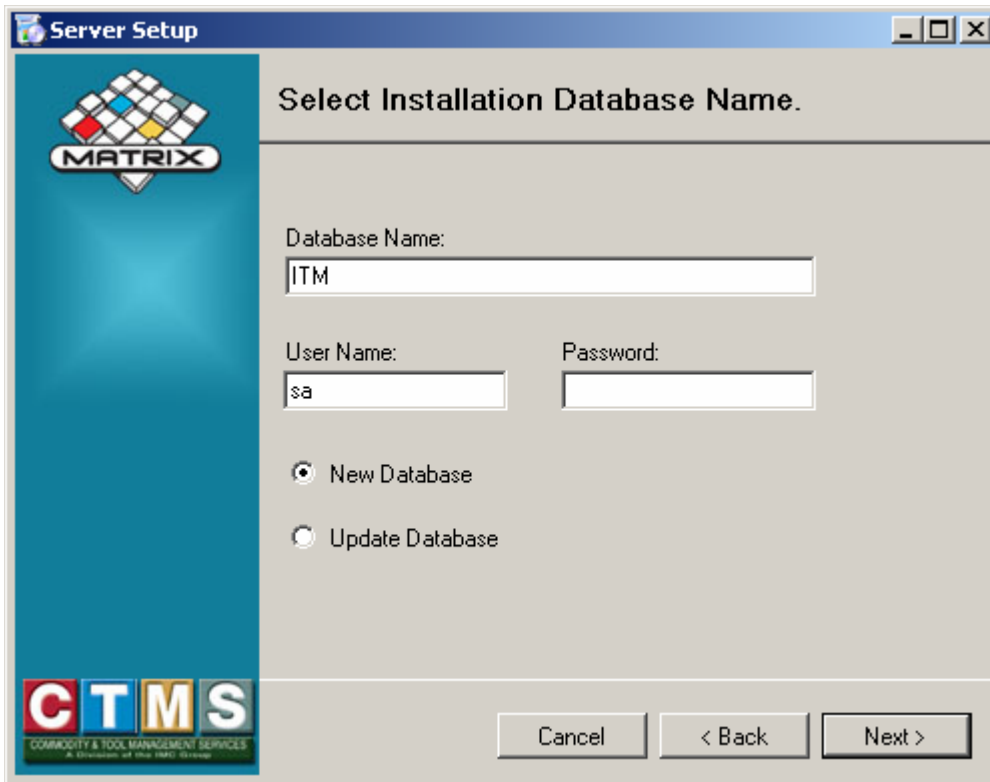


Note: This setup will install a new DB on your server or update an existing DB, overwriting the demo database.

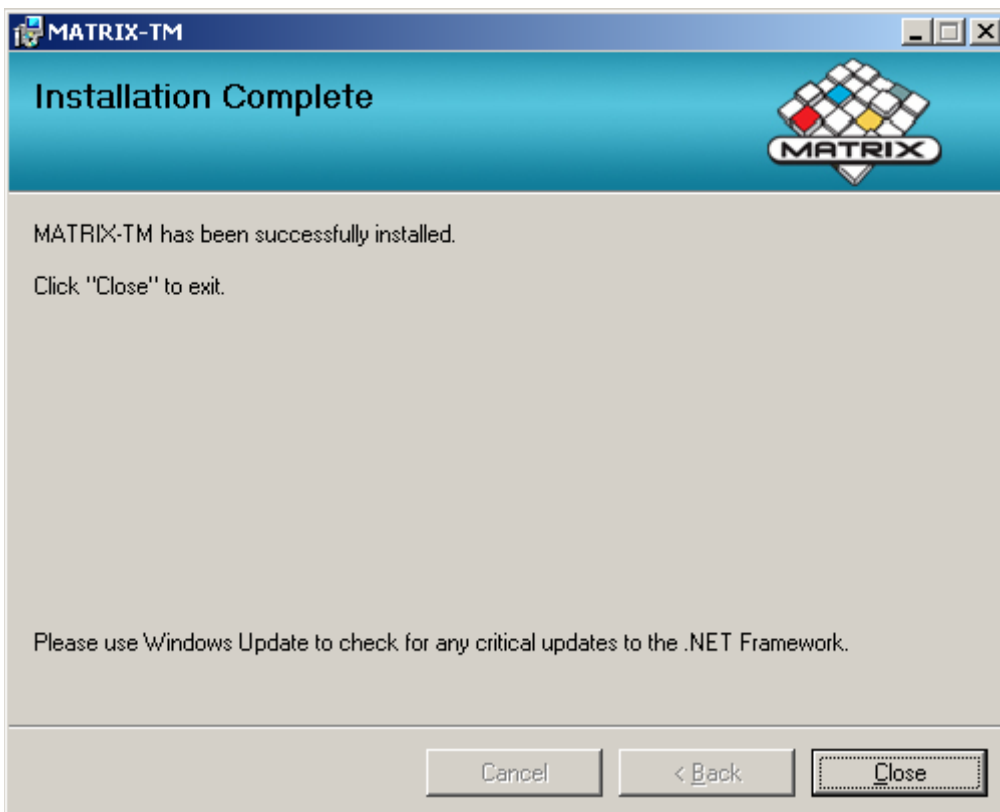
After setup is complete the Install Server wizard will open (See p. 26 of the **MATRIX-TM User**



update of an
new features,



Click the <Close> button to finish the installation.

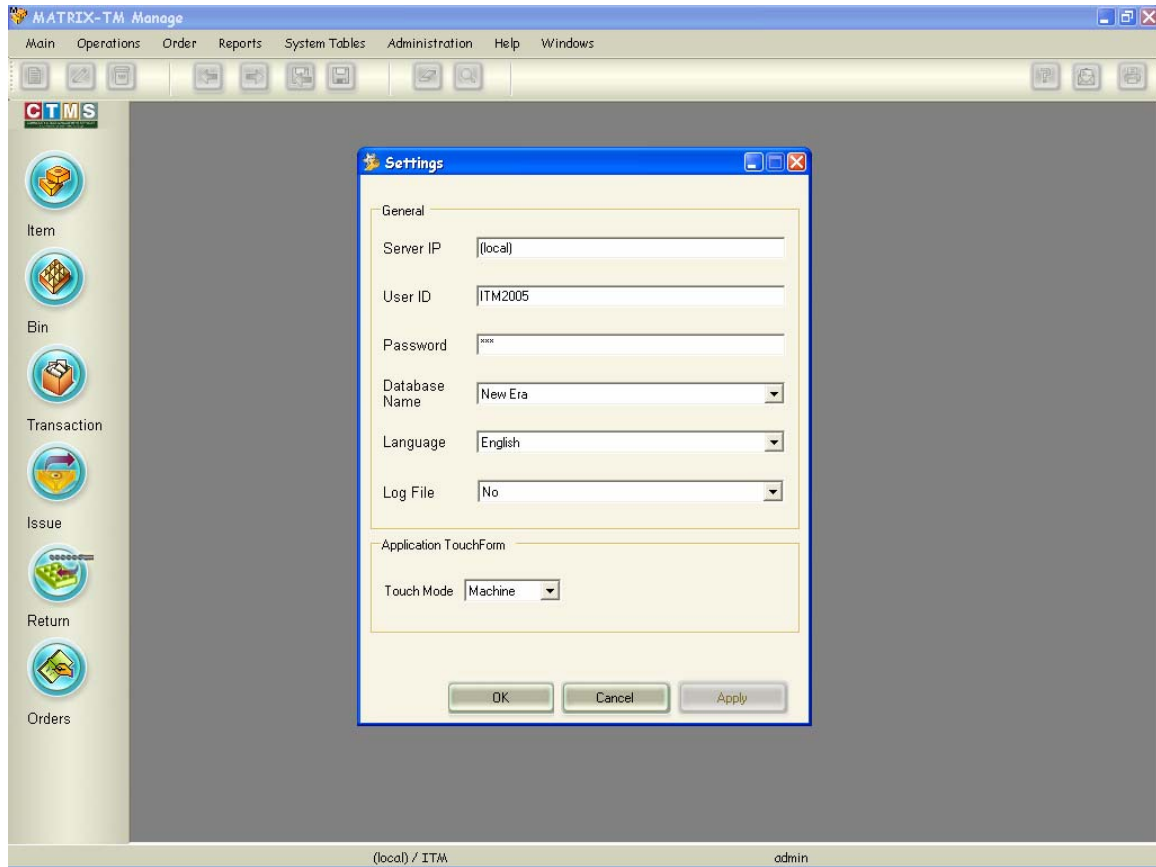


Updating Database Manually

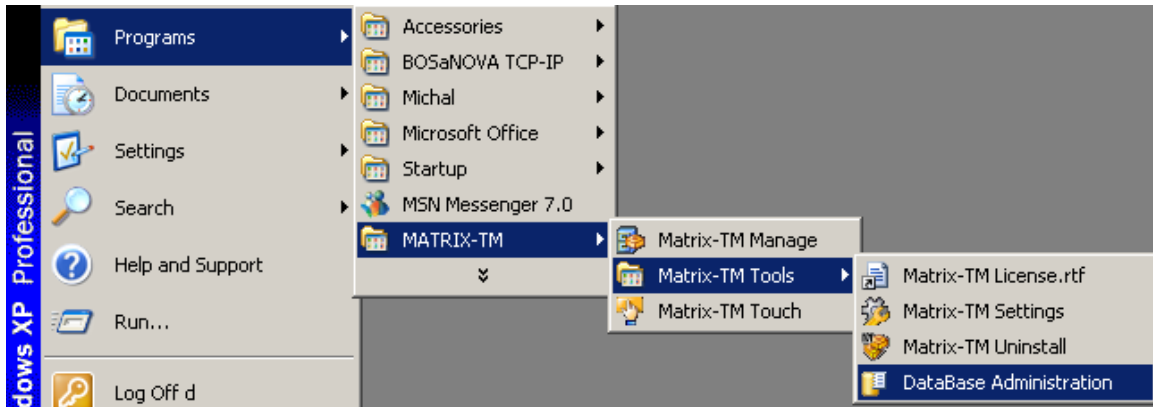
The database can also be updated manually after Matrix is installed or to an existing Matrix installation.

Before updating it is recommended that you backup your existing database (see p. 351 of the **MATRIX-TM User Guide Version 4.0**).

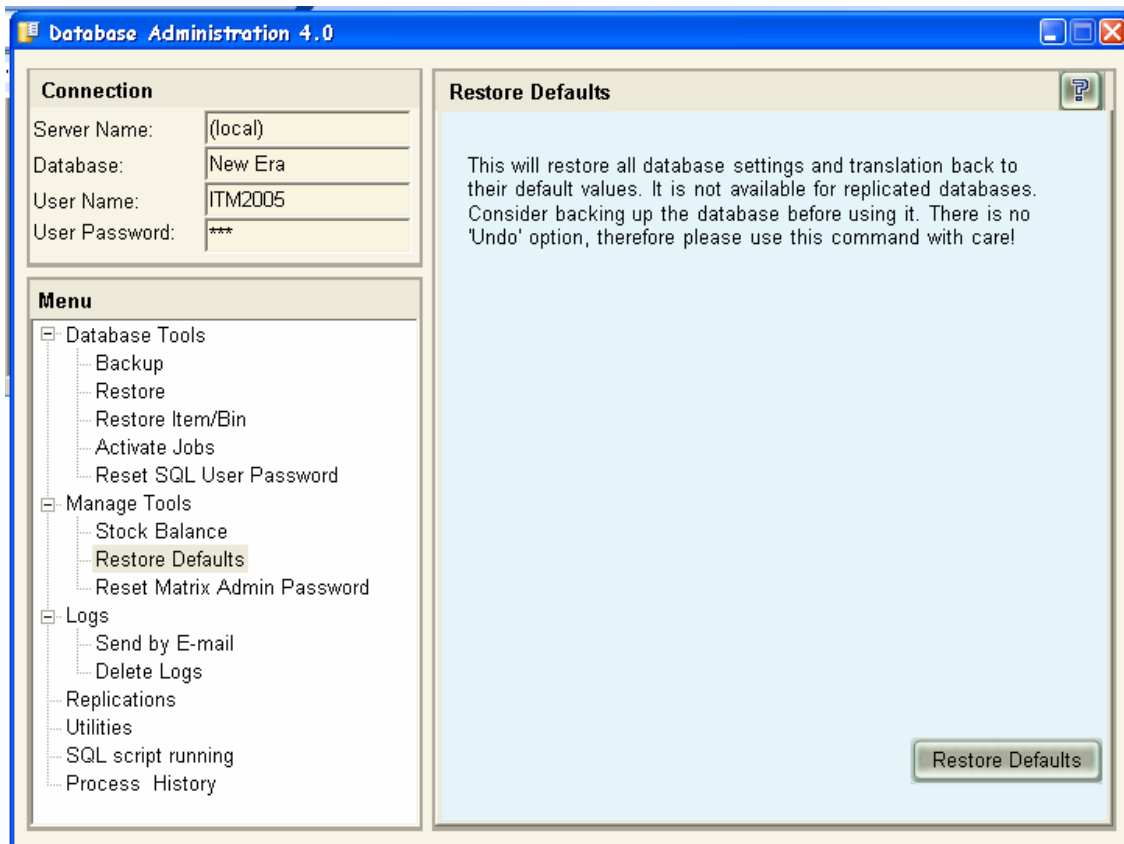
Go to Administration > Settings and make sure you have the database you are using selected and click OK. We're using New Era as the example here.



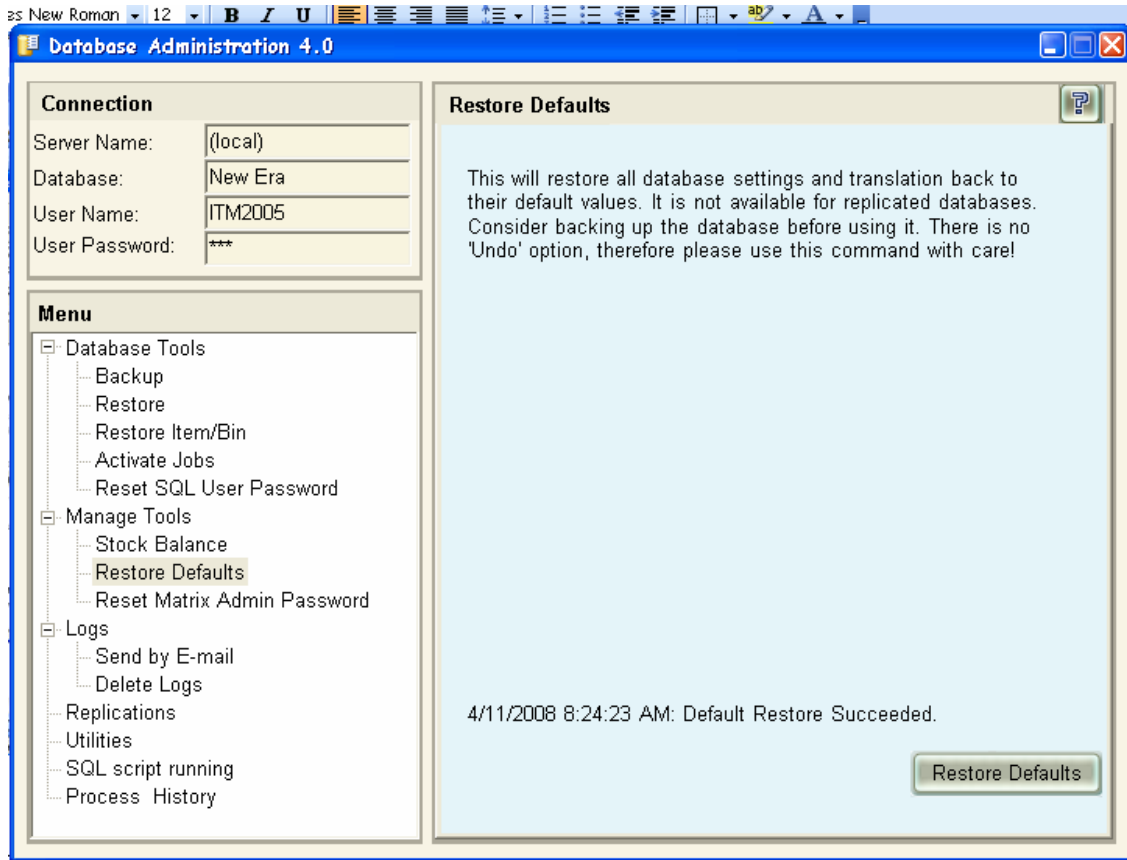
Open Database Administration and Log in.



Be sure the database name is listed.
In the Menu choose Restore Defaults.
Click the Restore Defaults button.



When Restore is finished you will see this screen telling you that the Default Restore succeeded.



To check the restored database, set the **Settings** program to the created database and login to the **Manage** module.